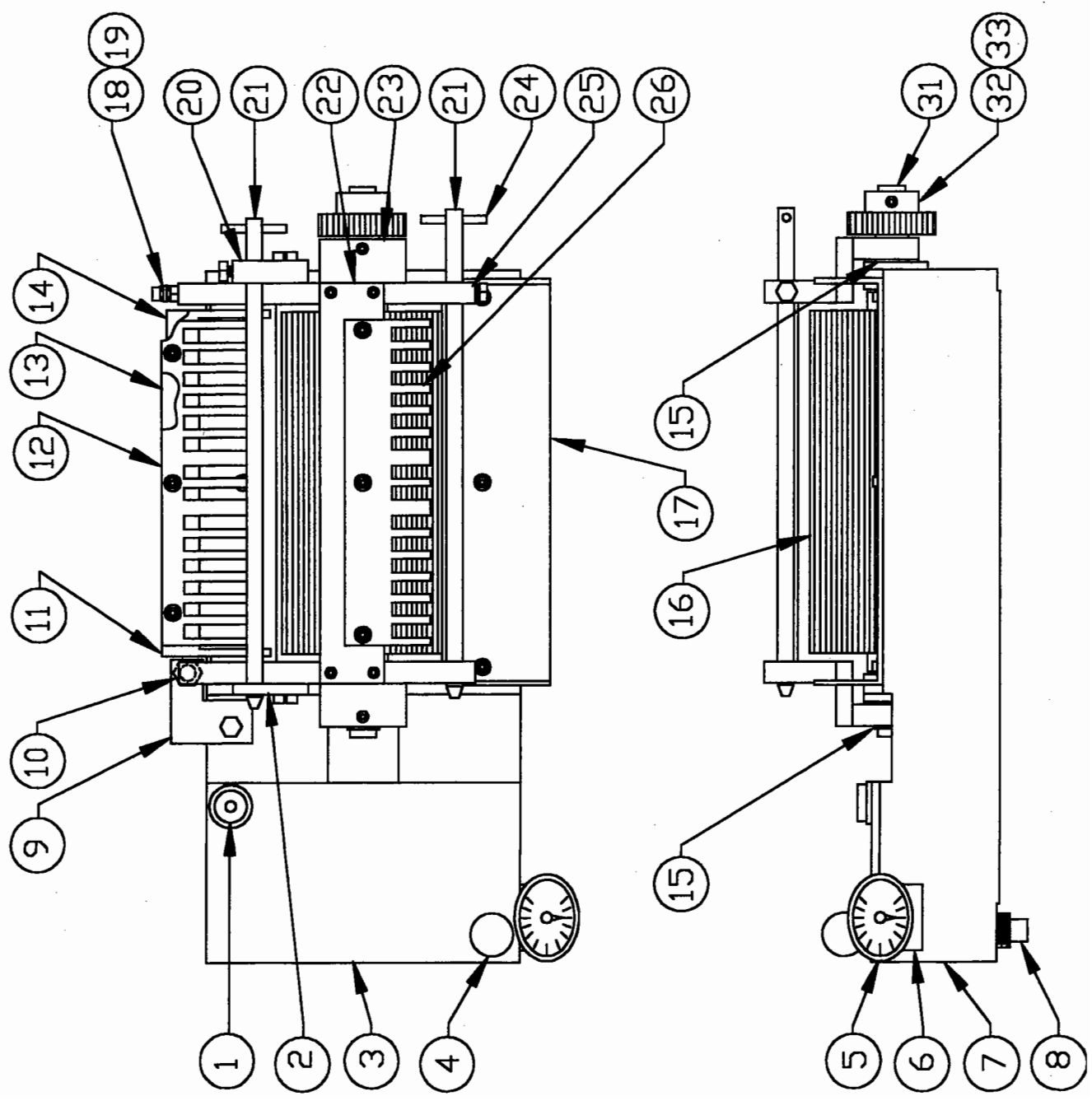


DWG. NO. NA5-A31
MODEL ASGAL LABELER
GUM POT ASSEMBLY



MODEL A5GAL LABELER GUM POT ASSEMBLY

DWG. NO. N45-A31

| ITEM NO. | PART NO. | DESCRIPTION |
|----------|-------------|--|
| 1 | NLE-3181 | GUM POT LID STUD |
| 2 | NL5-389R | GUM ROLL SHAFT SUPPORT-1/4' |
| 3 | NLE-319A | GUM POT LID |
| 4 | NLE-321 | GUM POT LID HANDLE |
| 5 | NLE-320 | GUM POT THERMOMETER |
| 6 | NL5-391 | THERMOMETER MOUNT BLOCK |
| 7 | NLE-A31/P | GUM POT BASE (INCLUDES ITEM #15) |
| 8 | NA-PF14 | 1/2" NPT BRASS PIPE PLUG |
| 9 | NL5-385 | GUM POT STUD MOUNT |
| 10 | FP-SQ06C28 | SQUARE HEAD SET SCREW |
| 11 | NL5-383A | BACK GUM ROLL SCRAPER |
| 12 | NL5-384 | BACK GUM ROLL GUIDE |
| 13 | NL5-390 | BACK GUM ROLL SCRAPER FILLER |
| 14 | NL5-382A | BACK GUM ROLL SCRAPER SUPPORT |
| 15 | NLE-340 | BRONZE BUAHING |
| 16 | NLE-A338 | FEED ROLL ASEMBLY (INCLUDES ITEM #15 & #31) |
| 17 | NL5-336 | BOTTOM GUM ROLL SCRAPER |
| 18 | NL-4325 | EXTENSION SPRING |
| 19 | NLE-324 | ROCKER ARM SPRING STUD |
| 20 | NL5-389L | GUM ROLL SHAFT SUPPORT-1/2' |
| 21 | NL5-A334 | TOP GUM ROLL SHAFT ASSEMBLY(INCLUDES ITEM #24) |
| 22 | NL5-388 | ROCKER ARM TIE PLATE |
| 23 | NL5-386 | ROCKER ARM PIVOT |
| 24 | F-SP5/32-24 | SPRING PIN |
| 25 | NL5-387 | ROCKER ARM SIDE SUPPORT |
| 26 | NL5-335 | TOP GUM ROLL SCRAPER |
| 27 | NLE-3207B | RUBBER GUM ROLL DISC - FORM D |
| 28 | NLE-A356B | CENTER GUM ROLL ASSEMBLY - FORM D |
| 29 | NLE-333E | BRASS GUM ROLL DISC - FORM C |
| 30 | NLE-A333B | CENTER GUM ROLL ASSEMBLY - FORM C |
| 31 | NLE-339 | FEED ROLL SHAFT |
| 32 | NLE-38 | FEED ROLL SHAFT SPUR GEAR |
| 33 | F-WK07 | WOODRUFF KEY |

WHEN ORDERING REPAIR PARTS, GIVE MODEL NO., MACHINE NO. & SERIAL NO.
AS WELL AS PART NUMBER AND NAME.

NEW WAY PACKAGING MACHINERY, INC.
P.O. BOX 467 210 BLETNER AVENUE
HANOVER, PA. 17331
TEL. (717) 637-2133 OR 637-8998
FAX. (717) 637-2966 WEB SITE: www.labeler.com